



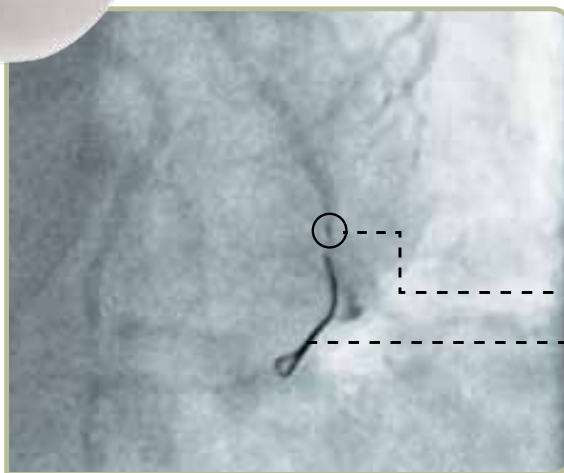
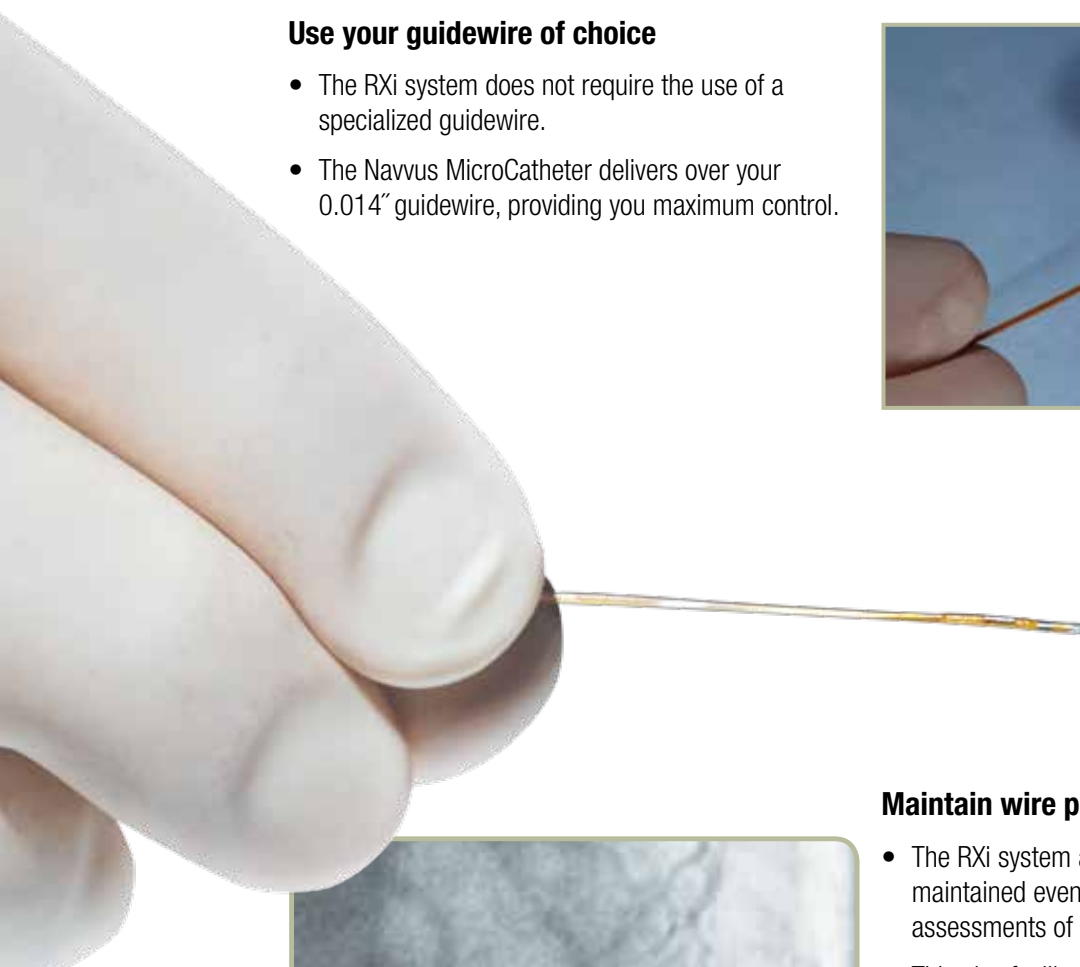
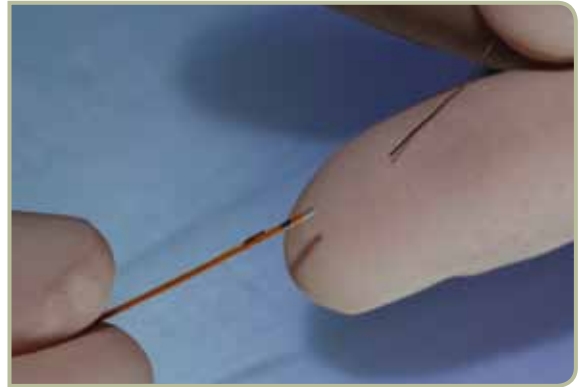
**ACIST | RXi**<sup>®</sup>  
Rapid Exchange FFR System

# The ACIST | RXi® Rapid Exchange FFR System

The RXi system with the ultra-thin ACIST Navvus® Rapid Exchange FFR MicroCatheter gives you the freedom to quickly and easily assess FFR using your wire of choice.

## Use your guidewire of choice

- The RXi system does not require the use of a specialized guidewire.
- The Navvus MicroCatheter delivers over your 0.014" guidewire, providing you maximum control.



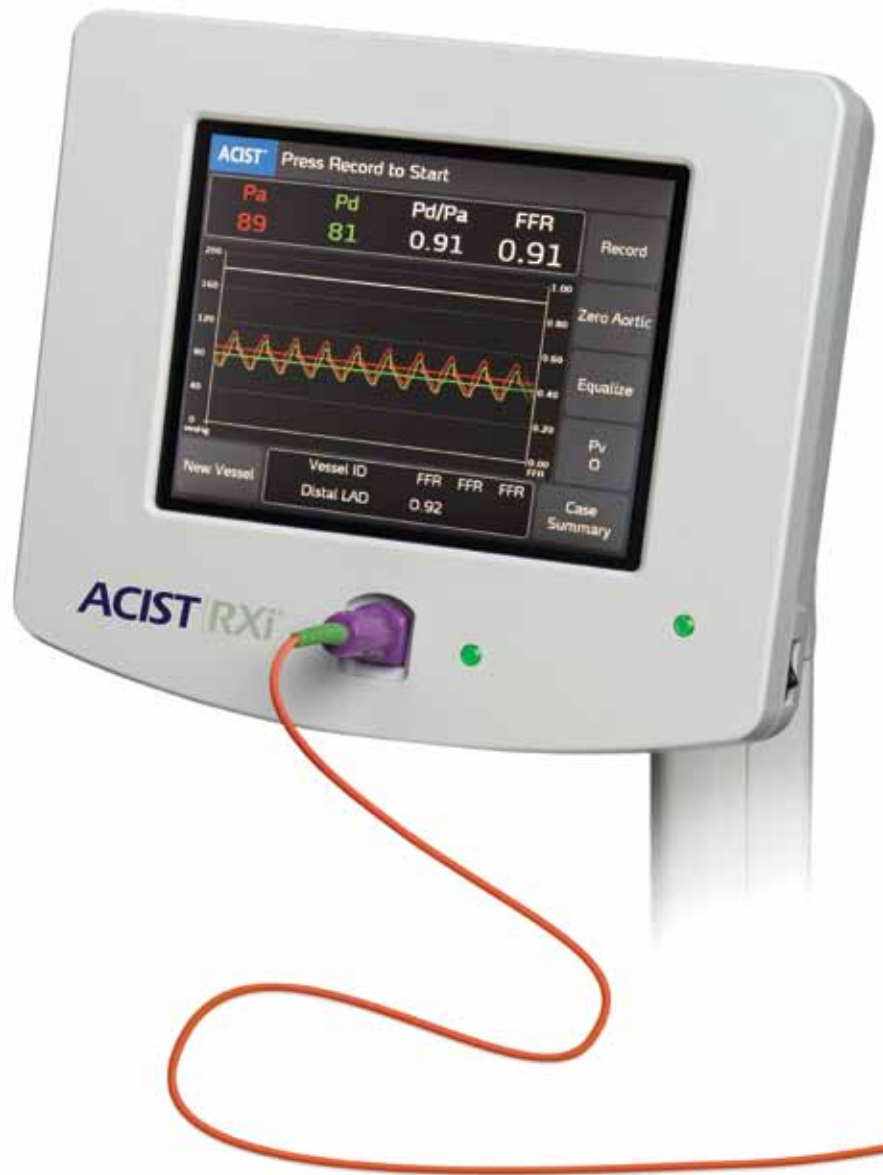
## Maintain wire position

- The RXi system allows wire position to be maintained even when performing pull-back assessments of multiple lesions.
- This also facilitates rapid FFR assessments before, during, and post-intervention.

- Navvus MicroCatheter marker band

- 0.014" guidewire

Image courtesy of Prof. Dr. med Thomas Münzel and PD Dr. Eberhard Schulz; University Hospital Mainz, Germany



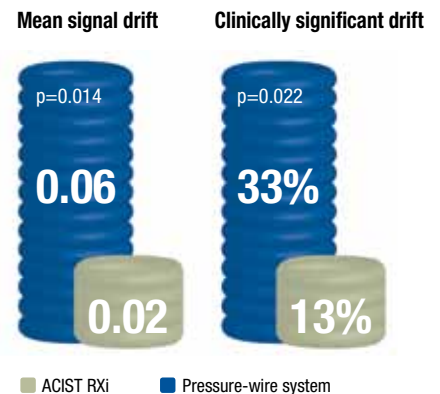
### Simple plug-and-play system

- Tableside, RXi is in a 'ready state' with the patient's aortic pressure displayed.
- The RXi system requires zeroing only once, at initial install, when in the 'stationary mode'.
- The Navvus MicroCatheter is self-calibrating once plugged into the RXi console.



### Fiber-optic accuracy

- The Navvus MicroCatheter uses fiber-optic sensor technology that provides accurate and reproducible hemodynamic pressure measurements.
- RXi produces accurate results with less drift when compared with traditional pressure-wire systems.<sup>1</sup>
- In the ACCESS-NZ study, signal drift was significantly lower (0.02 vs 0.06;  $p=0.014$ ) and clinically significant drift was observed in fewer measurements (13% vs 33%;  $p=0.022$ ) with RXi than with a traditional system. Clinically significant drift is defined as  $> \pm 0.03$ .<sup>1</sup>



#### Reference

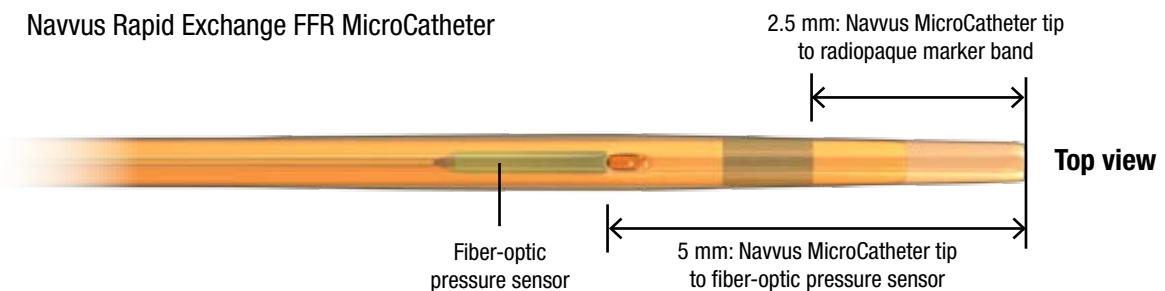
1. Menon M, Jaffe W, Webster M, for the ACCESS-NZ Investigators. Poster: FFR measurement using a new ultra-thin monorail catheter based system. EuroPCR 2013, Paris, France, 21–24 May 2013.

## Product and technical specifications

<b>RXi console (SKU # 014666)</b>	
Frequency	47–63 Hz
Voltage	12 V DC for the specified external switching power supply
Current	1.41 A DC maximum
Patient leakage current	Less than 10 $\mu$ A
Operating ambient temperature range	64–86°F (18–30°C)
Storage and operating humidity range	10–95%, non-condensing
Weight (with power supply and cables)	20 lbs (9.1 kg)
Dimensions	Depth: 3.5 inches (8.9 cm), width: 10.7 inches (27.2 cm), height: 9.2 inches (23.4 cm)
Pressure range	–30 to +300 mmHg relative to atmosphere throughout 580–800 mmHg absolute atmospheric pressure
Pressure accuracy	$\pm$ 3% of reading or $\pm$ 3 mmHg of reading over pressure range
Pressure drift	<7 mmHg over 1 hour
Frequency response	Response at 10 Hz within 3 dBA of the response at 1 Hz
High elevation use restriction	The system has been electrically safety tested for elevations of 0–2000 meters

<b>Navvus MicroCatheter (SKU # 014667)</b>	
Rapid exchange, single lumen microcatheter	
Fiber-optic pressure sensor technology located 5 mm from tip	
Microcatheter length	Overall: 131.9 inches (335 cm), working: 59.1 inches (150 cm)
Rapid exchange distal shaft length	10.2 inches (26 cm)
Operating ambient temperature range	64–86°F (18–30°C)
Operating atmospheric pressure range	11–15 psi, 77–106 kPa
Compatible with 5–8 Fr guiding catheters	

Navvus Rapid Exchange FFR MicroCatheter



### Contact us in the US:

ACIST Medical Systems, Inc.  
7905 Fuller Road  
Eden Prairie, Minnesota 55344  
Phone: (952) 995-9300  
USA Toll-free: 1-888-667-6648

### Contact us in the EU:

ACIST Europe B.V.  
Argonstraat 3  
6422 PH Heerlen  
The Netherlands  
Phone: +31 45 750 7000

### Visit our website:

[www.acist.com](http://www.acist.com)